

# BRI and the Mutual Connectivity of the World:

## Discover the Old Continent

## Develop the New Continent

Prof. Dr. WANG Yiwei (王义桅)

Jean Monnet Chair Professor

Director of Institute of International Affairs

Renmin University of China

[yiweiwang@ruc.edu.cn](mailto:yiweiwang@ruc.edu.cn)

Prof. Dr. WANG Yiwei (王义桅) | Jean  
Monnet Chair Professor | Director of  
Institute of International Affairs | Renmin  
University of China

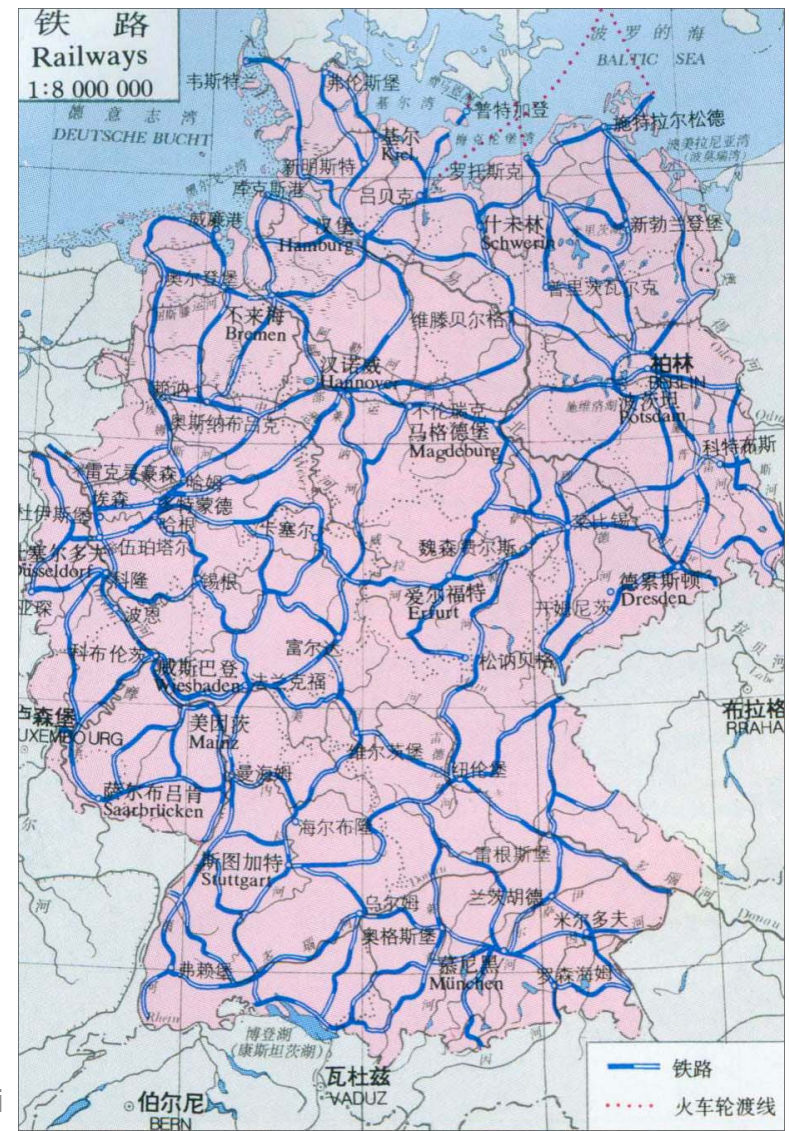
# Content

1. Why Silk Road?
2. Why China?
3. Why Now?
4. Why Good?

# 1. Why Silk Road?

Mutual Connectivity  
Infrastructure building

# German-Franco competition on systems



Prof. Dr. WANG Yiwei  
 Monnet Chair Professor | Director of  
 Institute of International Affairs | Renmin  
 University of China

Mutual Connectivity is the key for the 21<sup>st</sup> century comparative advantage

## The Global Connectivity Revolution

The Infrastructural Matrix:  
Exoskeleton on the  
Planetary Body

- Skeleton System / Transportation: Highways, railways, bridges, tunnels, airports, seaports
- Vascular System / Energy: Oil & gas pipelines and refineries, electricity grids and power plants
- Nervous System / Communications: Internet cables, satellites, data centers



Prof. Dr. WANG Yiwei (王义桅) | Jean  
Monnet Chair Professor | Director of  
Institute of International Affairs | Renmin  
University of China

# Cartographic Evolution



Natural Geography



Political Geography



Functional Geography

**“What we build today will last centuries.” - Santiago Calatrava**

# MUTUAL CONNECTIVITY

POLICY  
COORDINATION



FACILITIES  
CONNECTIVITY



UNIMPEDED  
TRADE



FINANCIAL  
INTEGRATION



PEOPLE-  
TO-  
PEOPLE  
BOND



Prof. Dr. WANG Yiwei (王义桅) | Jean  
Monnet Chair Professor | Director of  
Institute of International Affairs | Renmin  
University of China

# 尼康相机的启示

- 马云：“我们与亚马逊的不同在于，他们更像是一个电商帝国，控制着销售或购买。我们的理念是构建一个电商**生态系统**。”
  - “这也是美国的全球化模式和中国的“一带一路”的区别。前者以借助强大的海军**直接控制**全球海上空间为基础，中国希望的是借助于后者，通过对陆地和相关基础设施的投资**增强**国际影响力。”
- 西班牙《国家报》（2019年4月7日）文章“亚马逊和阿里巴巴：两种全球化模式的碰撞”



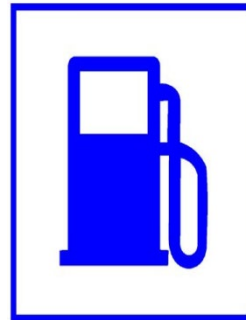
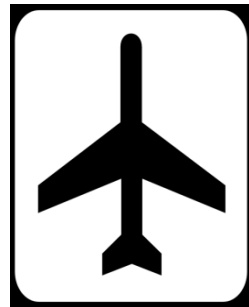
# 应潮流、得民心、惠民生、利天下

- 习近平主席指出，共建“一带一路”，**关键是互联互通**。我们应该构建**全球互联互通伙伴关系**，实现共同发展繁荣。第二届一带一路国际合作高峰论坛达成283项务实成果，企业家大会上也签署了总额640多亿美元的项目协议。“这届论坛对外传递了一个明确信号：共建一带一路的**朋友圈越来越大、好伙伴越来越多、合作质量越来越高、发展前景越来越好**。”

# “一带一路”，魅力何在？

- 三个“顺应”，揭示共建“一带一路”成功的奥秘：“顺应经济全球化的历史潮流”“顺应全球治理体系变革的时代要求”“顺应各国人民过上更好日子的强烈愿望”。
- 三个“要”字，为高质量共建“一带一路”指明路径：“要秉持共商共建共享原则”“要坚持**开放、绿色、廉洁**理念”“要努力实现**高标准、惠民生、可持续**目标”。

BRI comprises the railway, highway, airlines, sealines, oil-gas pipelines, power transmission lines and communication network



A comprehensively stereoscopic transportation network with high interconnectivity

## 2. Why China?

# China experience

- If you want to get rich, build roads first.
- If you want to get richer, build the motor road.
- If you want to get richest, build the internet road.
- If you want to get rich together, connects the road with China and to the world through BRI!
- Development is the key to solve all problems

# China Strength in BRI

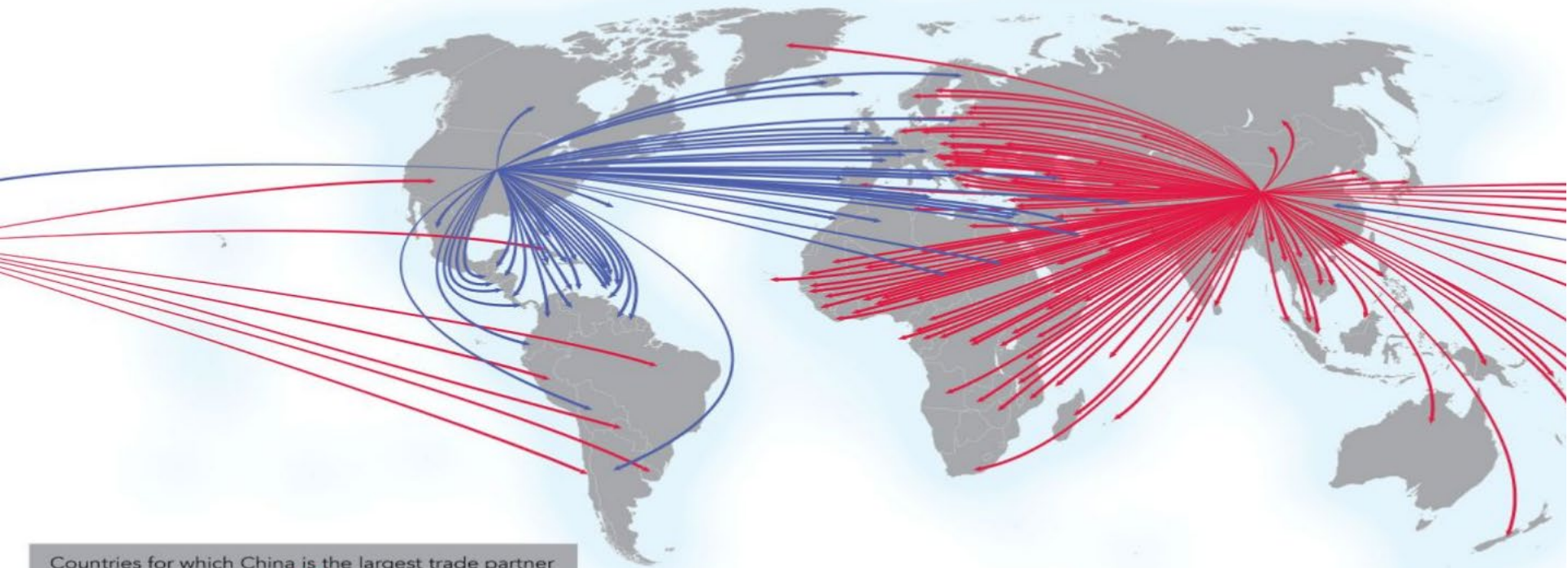
1. China Model: Gov+Market
2. Four Trillion USD foreign reserve, high saving rate.
3. Tech: most completed and independent industries
4. Culture: Inclusiveness

# The Money, Where from?

- Loans from World Bank, Asian Development Bank and alike
- Silk Road Fund. Ltd, 40 billion USD and Growing since 2014
- Asian Infrastructure Investment Bank
  - A Public-Private Partnership like European Investment Bank

# China is no 1 trade partners of 130 countries

China is top trading partner for twice as many countries as the US



Countries for which China is the largest trade partner  
124

Countries for which America is the largest trade partner  
56



# 中国的超级高铁

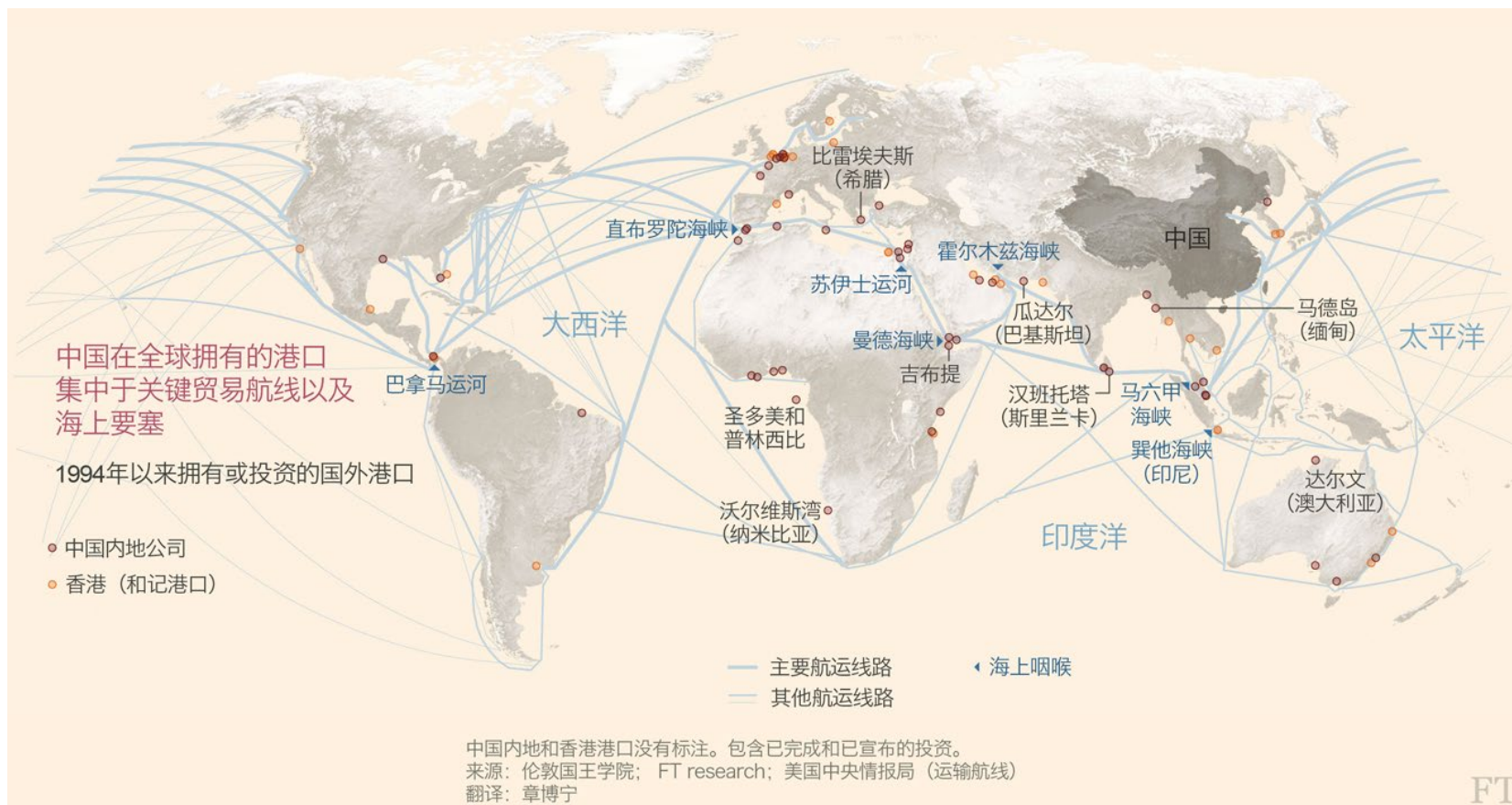
## CRH 中国高速铁路运营线路图



Prof. Dr. WANG Yiwei (王义维) | Jean Monnet Chair Professor | Director of Institute of International Affairs | Renmin University of China

# 中国的海上航线

## Chinese maritime shipping routes

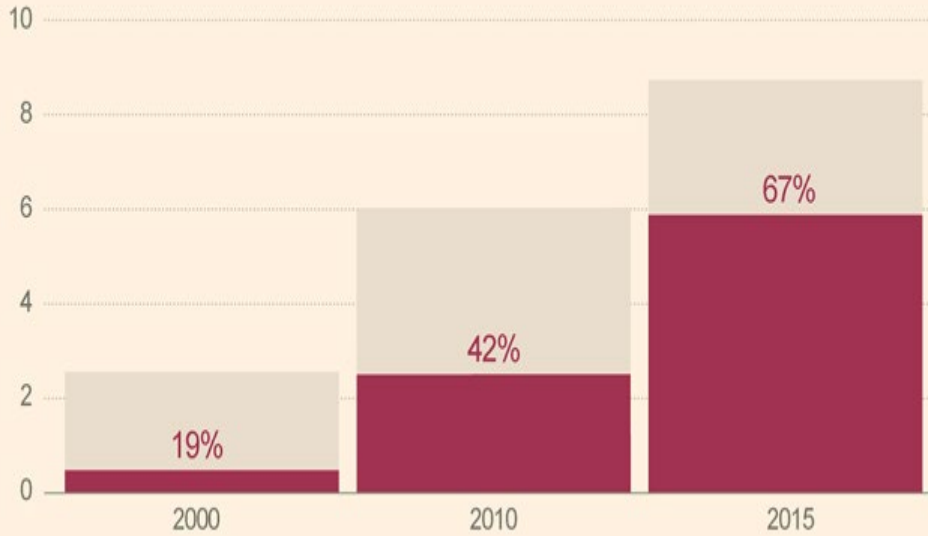


FT

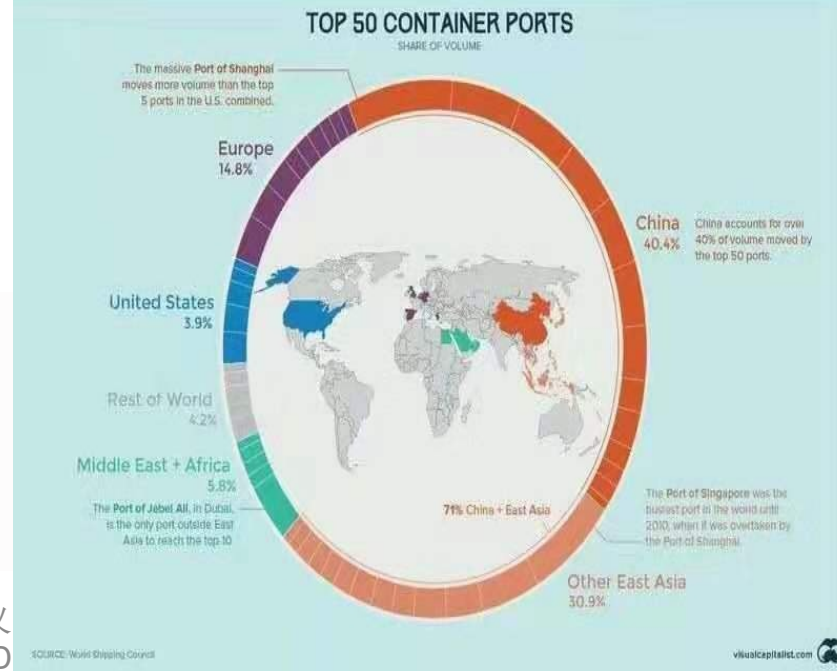
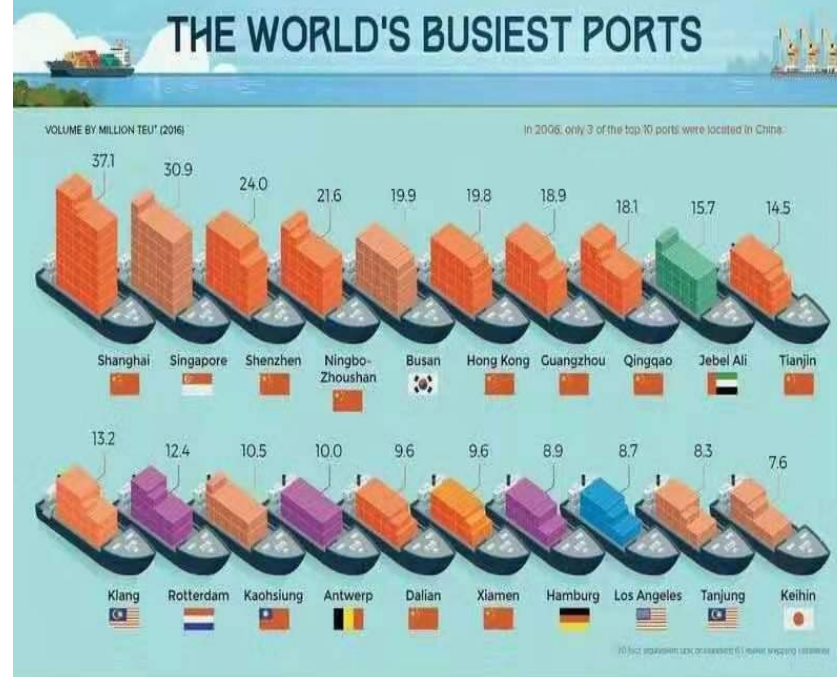
Prof. Dr. WANG Yiwei (王义桅) | Jean Monnet Chair Professor | Director of Institute of International Affairs | Renmin University of China

# 全球三分之二的集装箱运输经过中国拥有或投资的港口

单位：20英尺当量（亿）以及占全球前50大集装箱港口的比例%



数据包括经过中国或香港公司投资（即使是少数股权）的港口的集装箱估计吞吐量  
 劳氏情报 (Lloyd's List Intelligence) ; FT research  
 翻译: 章博宁

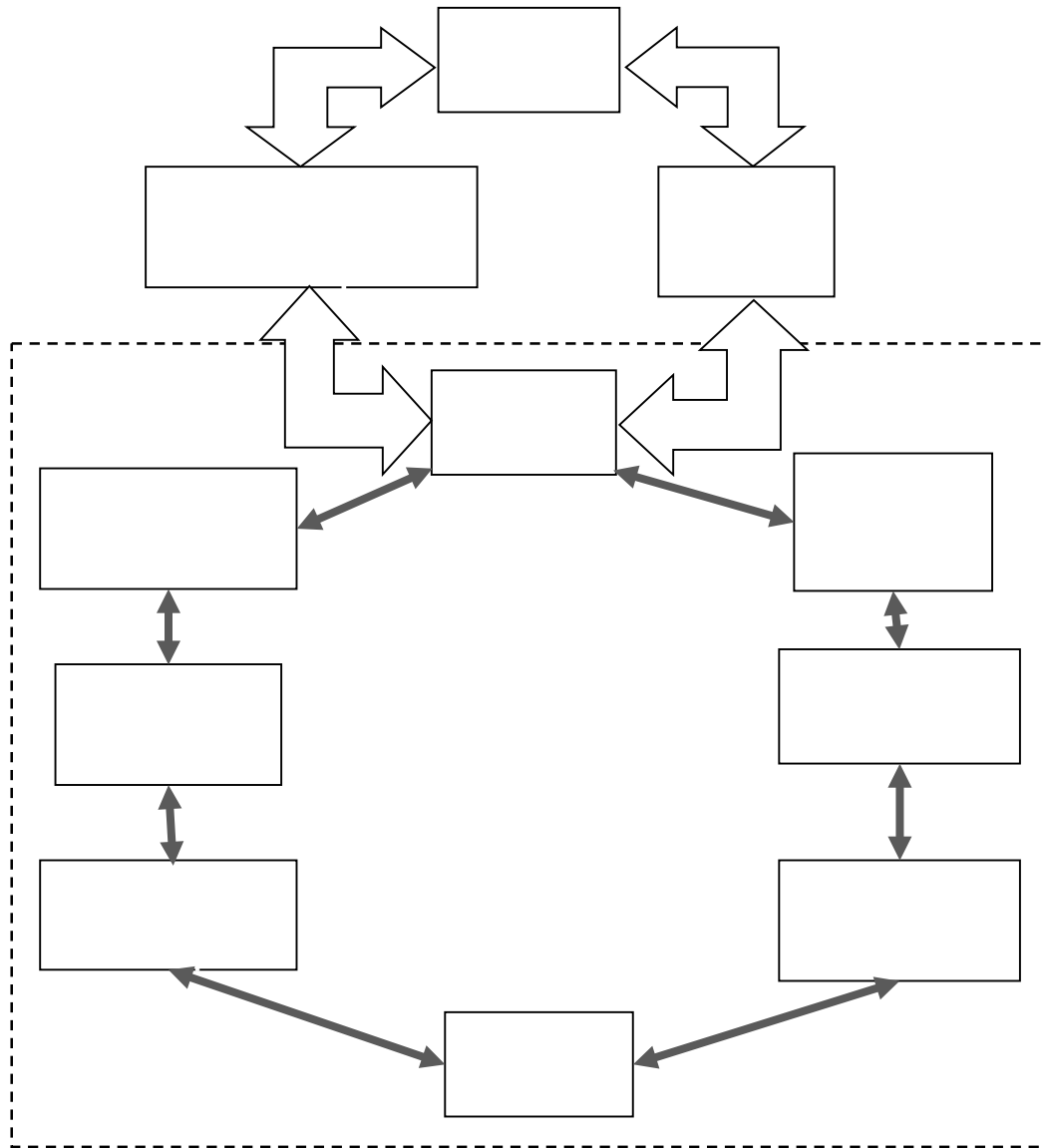


截至2015年，在全球前50大集装箱港口中，近三分之二都有中国的投资，而2010年这一比例只有五分之一左右。

Prof. Dr. WANG Yiwei (王义  
 Monnet Chair Professor) D  
 Institute of International Affairs |Renmin  
 University of China



# 3. It`s Just... Why NOW?



## Double loop value chain system

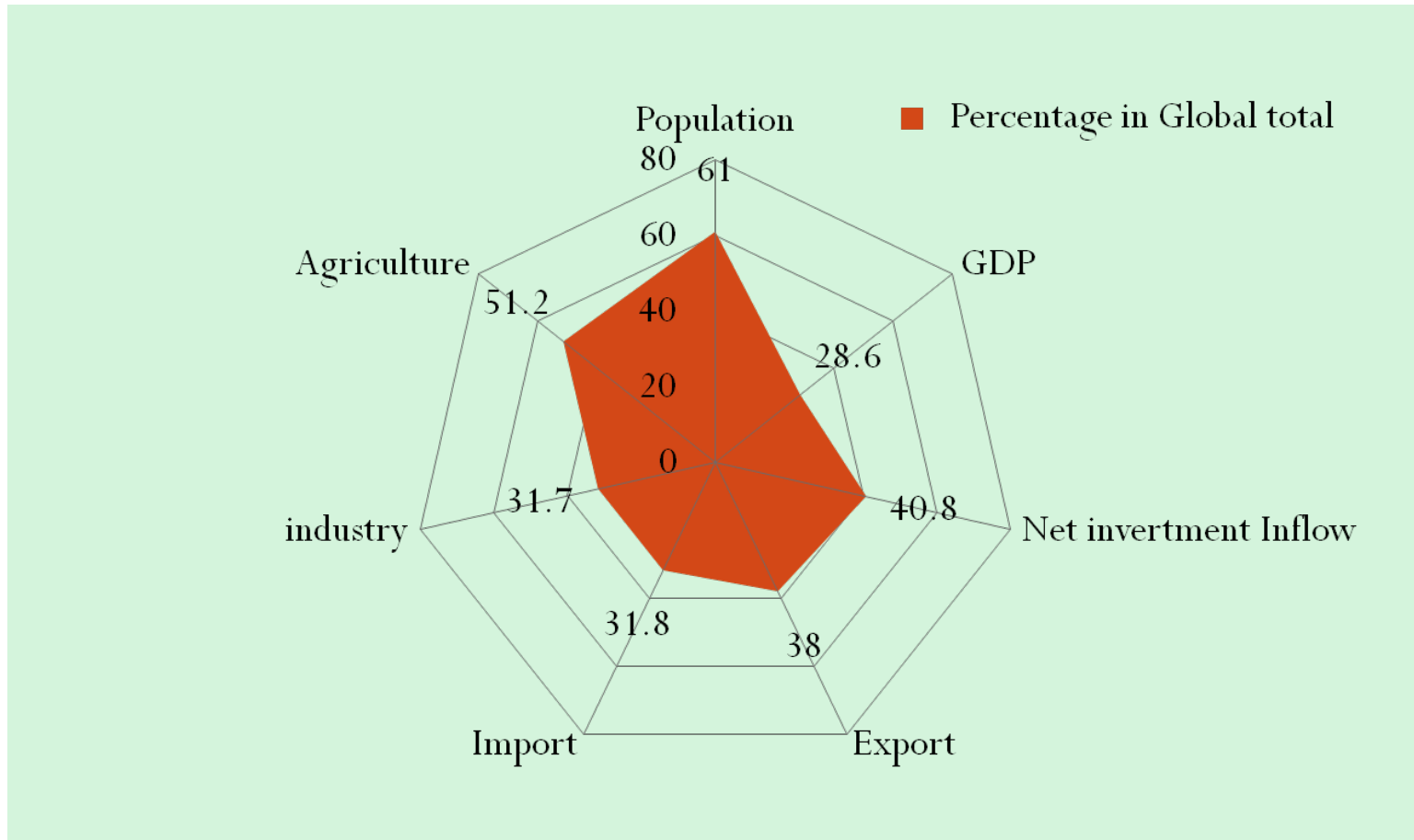
Prof. Dr. WANG Yiwei (王义桅) | Jean  
 Monnet Chair Professor | Director of  
 Institute of International Affairs | Renmin  
 University of China

# Achieving SDG



Prof. Dr. WANG Yiwei (王义桅) | Jean Monnet Chair Professor | Director of Institute of International Affairs | Renmin University of China

# Growing Importance of Silk Road Regions in Global Economy

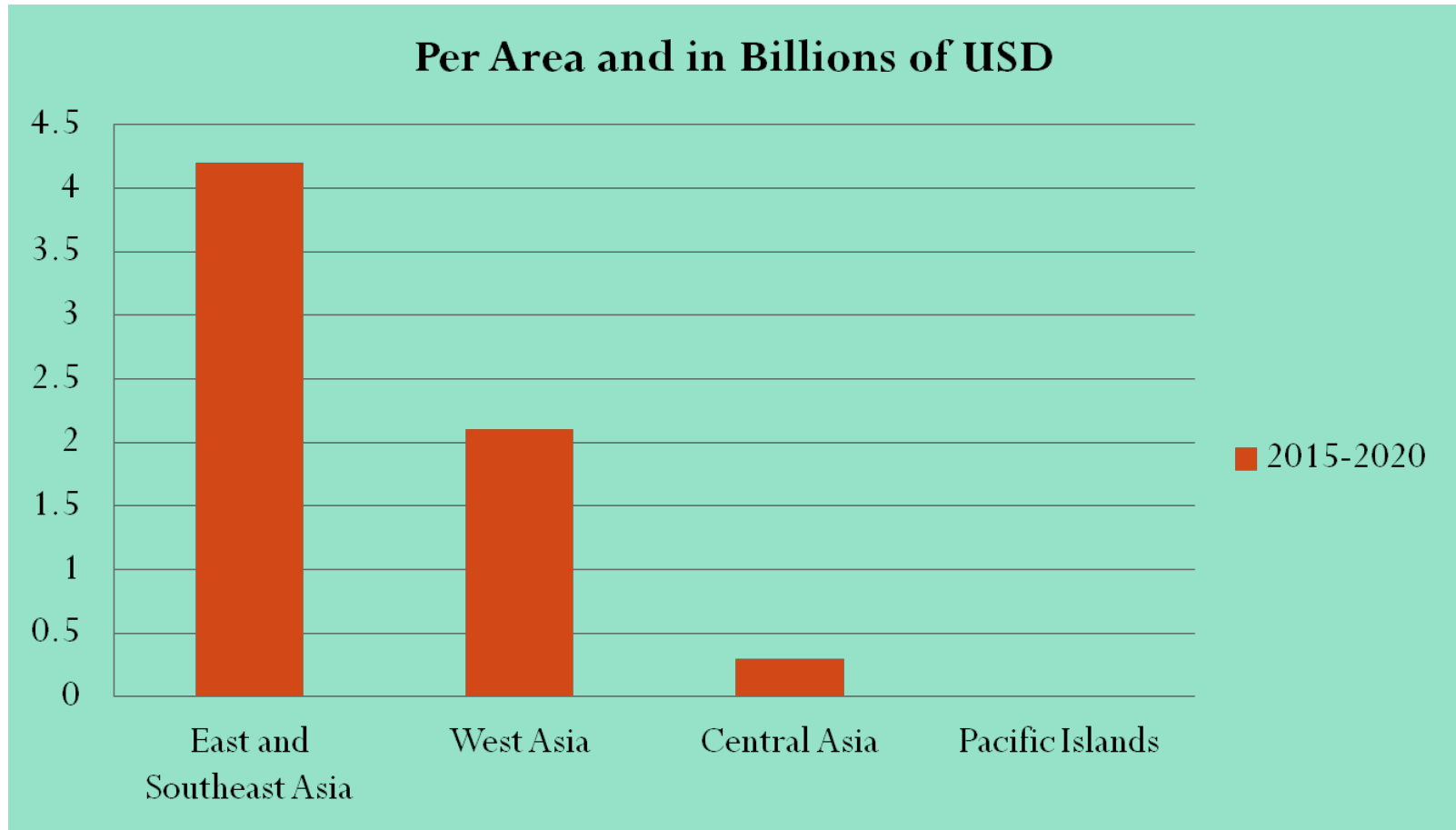


Prof. Dr. WANG Yiwei (王义桅) | Jean Monnet Chair Professor | Director of Institute of International Affairs | Renmin University of China

# Infrastructure Investment Demand in coming Years

Estimated: 6.6 billion USD 2015 to 2020

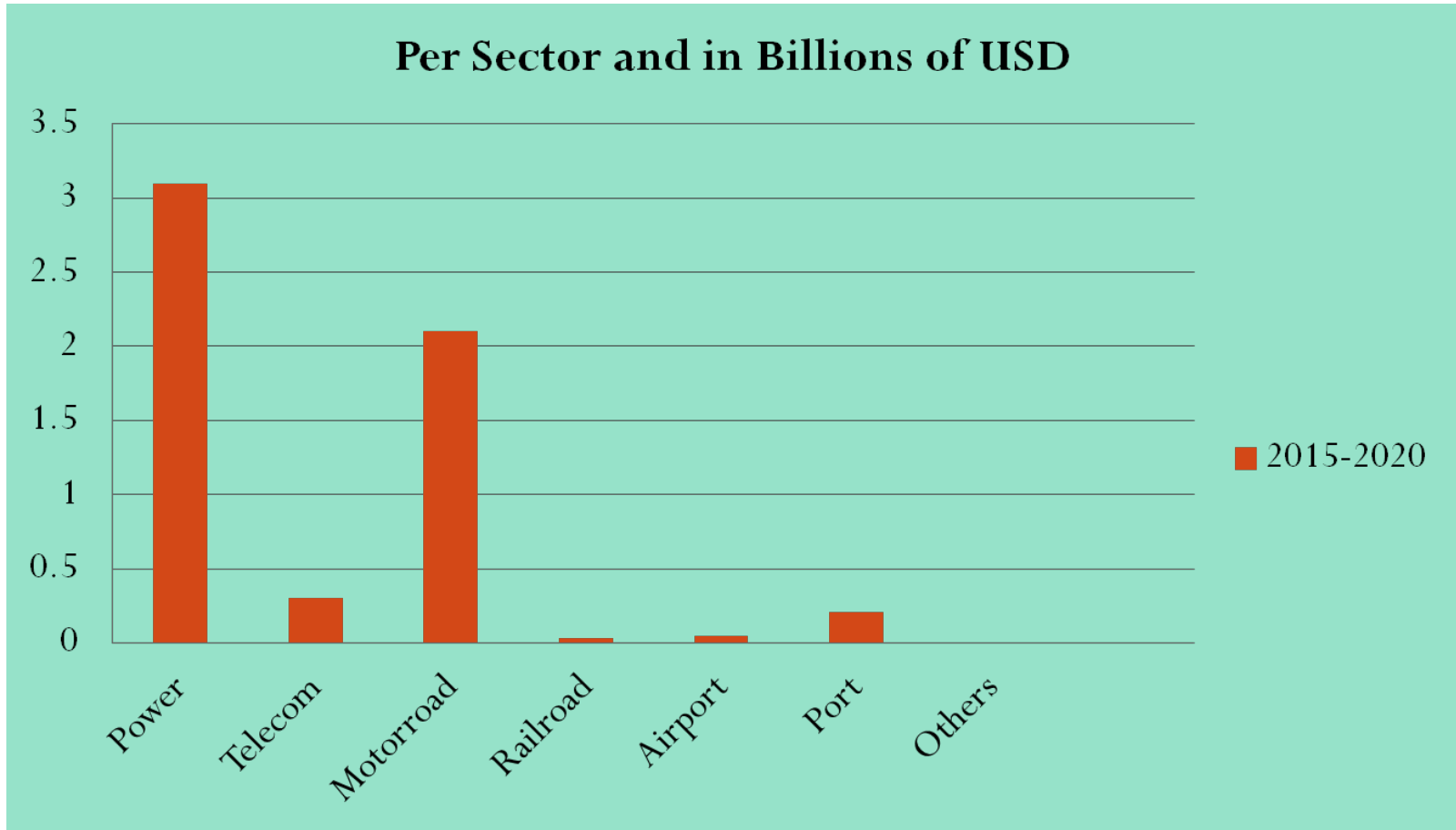
14.3 billion USD 2015 to 2025



Prof. Dr. WANG Yiwei (王义桅) | Jean Monnet Chair Professor | Director of Institute of International Affairs | Renmin University of China



China's trade with BRI topped 1 trillion USD in 2013, after a decade of 19% average growth, and is still growing fast.



Prof. Dr. WANG Yiwei (王义桅) | Jean Monnet Chair Professor | Director of Institute of International Affairs | Renmin University of China

# Usher in Inclusive Globalization

- Conventional globalization featured in tariff reduction for free trade would facilitate the economic growth by **5 percent at most**, while the new one with high levels of interconnectivity is suppose to generate a **10-15 percent increase** for global economy.
  - Parag Khana *Connetography*
- McKinsey Forecasts, **BRI will contribute 80% of global economic growth and vault 3 billion more middle class by 2050.**
- In the coming decade, BRI will create 2.5 trillion USD trade.

# And the BRI mission...

# Seeking Way for Global Prosperity in Post-Crisis Era

- As the new engine of global economic growth, China brings its advantages in productivity, technology, funding, experience, and development into package and offer.
- The Belt and Road Initiative is the result of this and China's new phase of all-around opening-up.

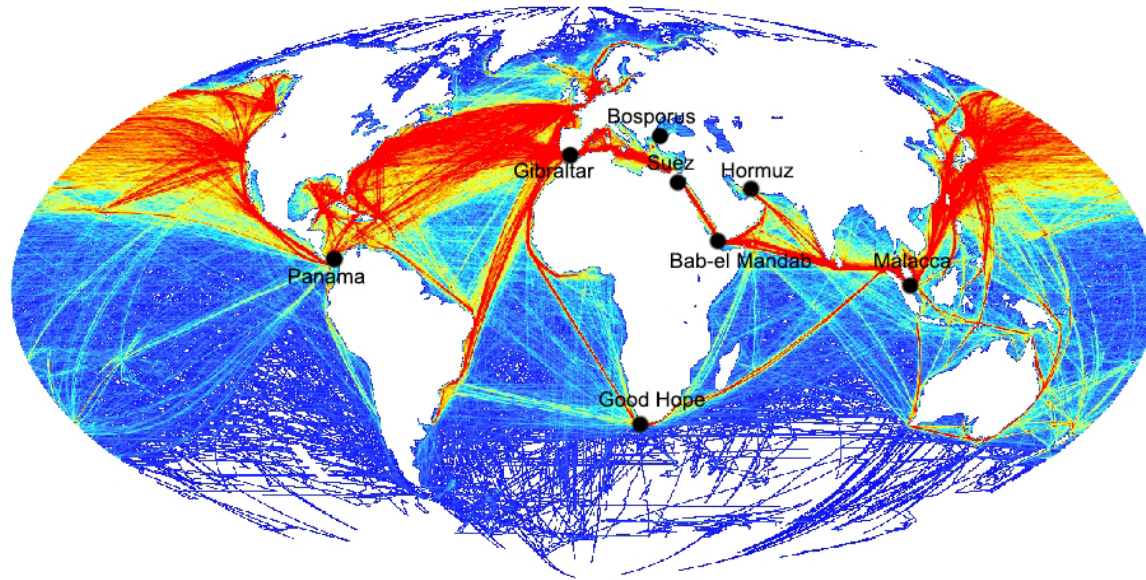
# 破除和平、发展、治理三大赤字

- 世界银行等国际机构的最新研究表明，“一带一路”合作将使全球贸易成本降低1.1%到2.2%，推动中国—中亚—西亚经济走廊上的贸易成本降低10.2%，还将促进2019年全球经济增速至少提高0.1个百分点。
- “一带一路”相关投资可以额外帮助全球多达3400万人摆脱中度贫困，其中2940万人来自“一带一路”沿线国家和地区。
- <https://www.worldbank.org/en/topic/regional-integration/brief/belt-and-road-initiative>

# Global Rebalance

- Traditional globalization starts from the sea. Coastal regions and maritime states develop first, while inland countries fall behind, forming a massive wealth gap.
- From **Partial globalization** to **Inclusive globalization**

# With Global Shipping Like This



Prof. Dr. WANG Yiwei (王义桅) | Jean  
Monnet Chair Professor | Director of  
Institute of International Affairs | Renmin  
University of China

# And Nocturnal World This



Prof. Dr. WANG Yiwei (王义桅) | Jean  
Monnet Chair Professor | Director of  
Institute of International Affairs | Renmin  
University of China





点一盏灯让世界亮起来！

Prof. Dr. WANG Yiwei (王义桅) | Jean

Mannet Chair Professor | Director of

Institute of International Affairs | Renmin

University of China

<https://mp.weixin.qq.com/s/YmDzOiojWg1WoWE2o-2BMQ>

# Submarine Optical Fiber Cable



# 4. Why Good for the world?

# FDI, Tourists, International capacity cooperation, joint develop the third market

- China **has invested more than \$90 billion** in countries and regions involved in the Belt and Road Initiative since its inception in 2013, with **commodity trade exceeding \$5 trillion**.
- China has set **up 83 overseas economic and trade cooperation zones**, with an investment exceeding \$27 billion and created jobs for more than 300,000 local people. China's Silk Road Fund has inked 19 projects with committed investment of \$7 billion.
- In coming five years, Chinese outbound investment in BRI countries will reach up to 500 billion USD; Chinese tourists going abroad is expected to reach 700 million.

# Case on Europe

- “If Europe does not want to become the periphery of the world it has to culturally and economically engage with Asia following the ancient silk road”

——Robi Ronza, 1984

- There is only one way for Europe to escape its geopolitical trap: it too must embrace its Eurasian vocation.

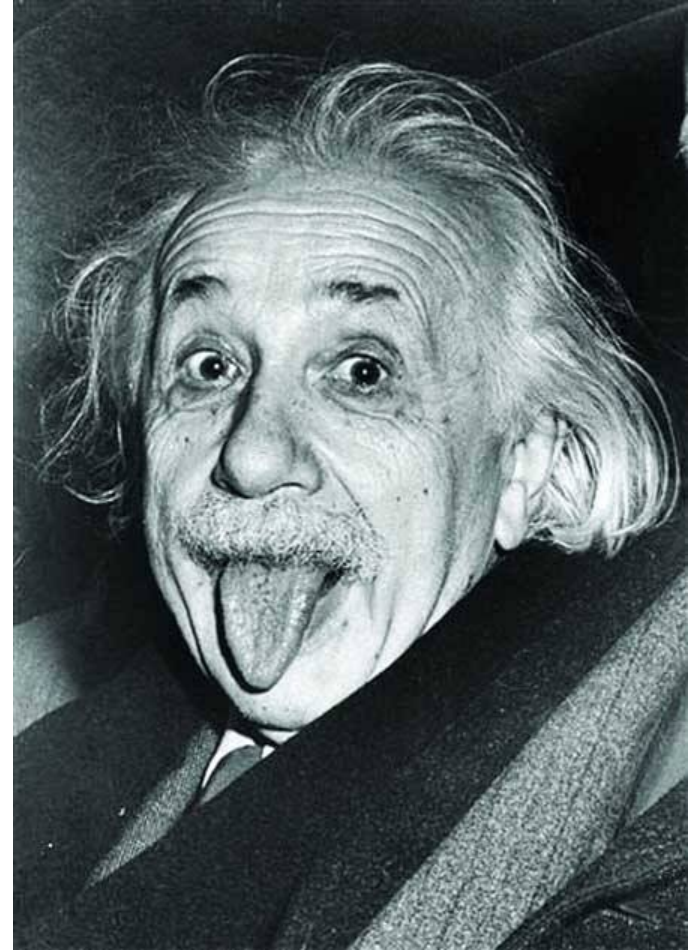
— Bruno Maçães: “We are all Eurasian now”, FT  
November 25, 2015

$$E=MC^2$$

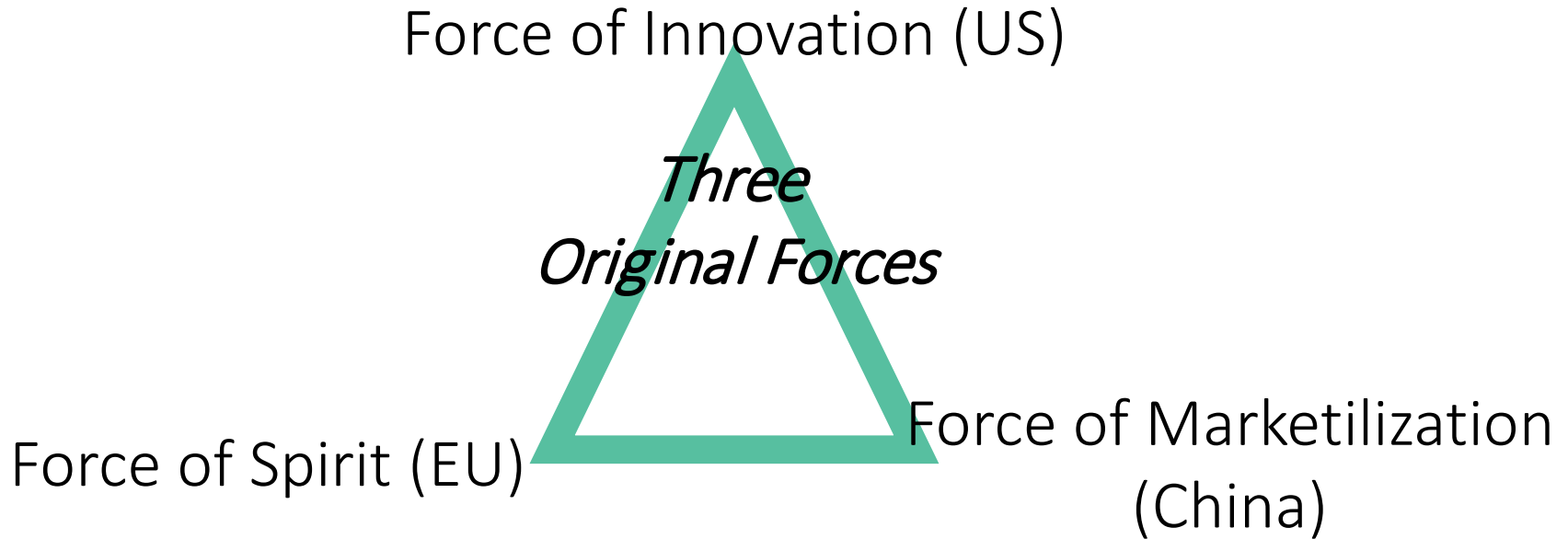
E: Europe

M: Mutual Connectivity

C<sup>2</sup>: China multiplies Eurasian  
Continent



# US-EU-China New Triangle

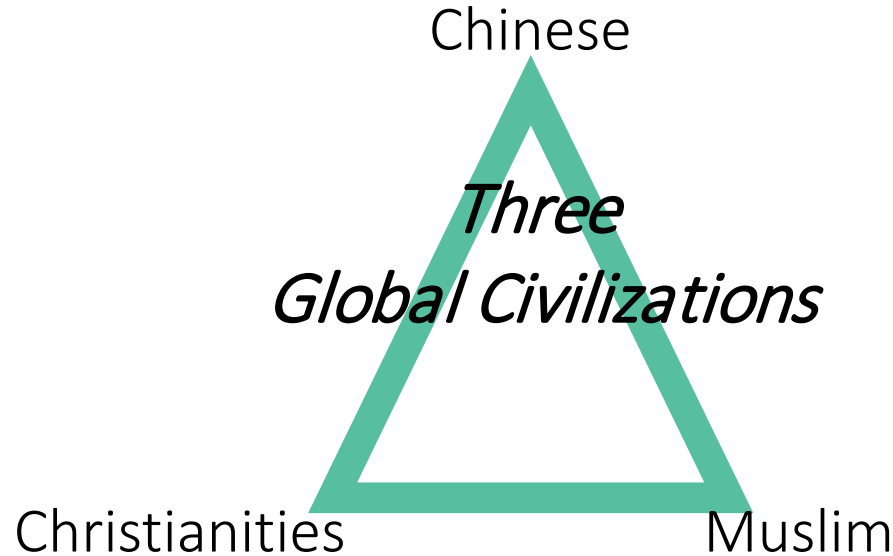


Overcome Innovation Pitfall (**Inclusive Innovation**):

**US: Labor-saving**

**EU : Resource-saving**

# New Triangle Global Civilizations



- Chinese Civilization (man-man relations, be a good man)
- Christianities Civilization (man-nature relations, be do efficient things)
- Muslim Civilization (man-God relations, be a good sanitary)



# Better BRI, Better Life

- Among 56 BRI countries,
- 8 LDC
- 24 Human Development Index
- 16 Non-WTO Countries

# For More:

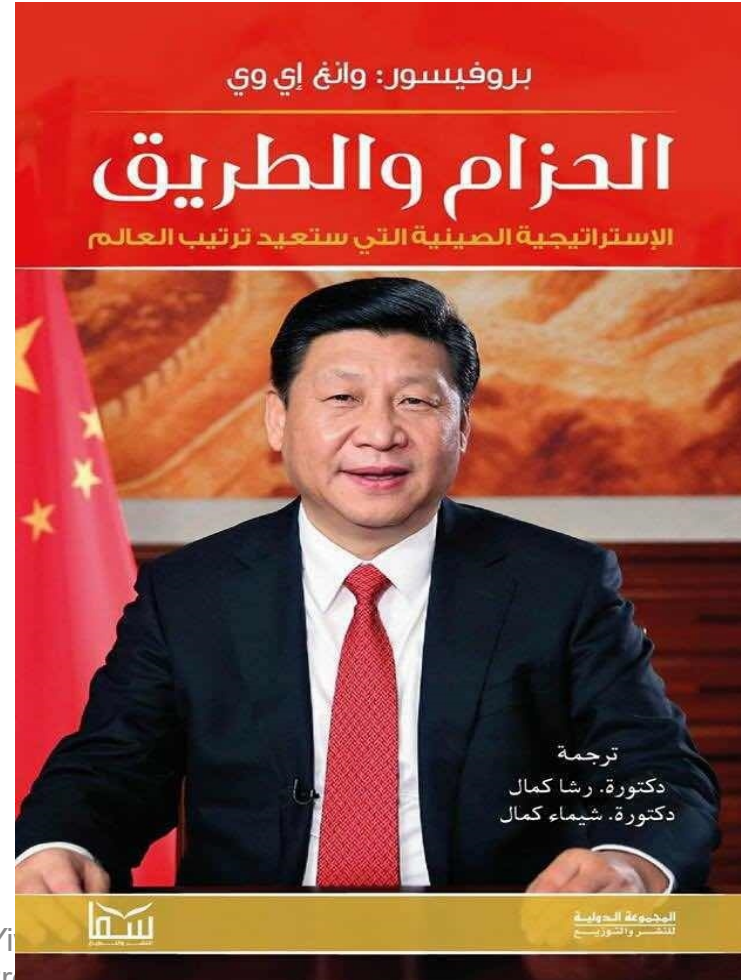
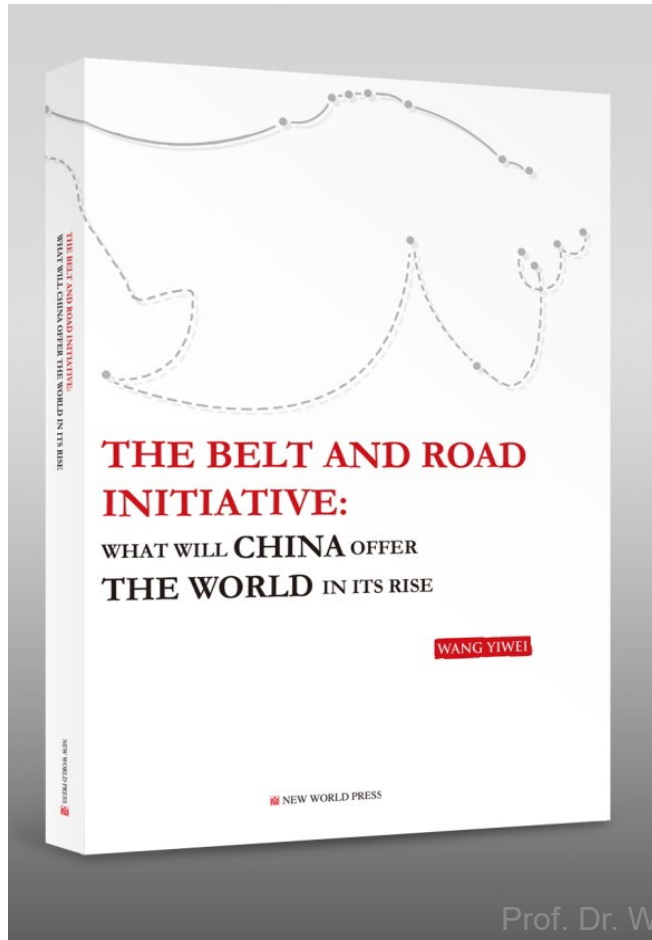
- Official website : <https://eng.yidaiyilu.gov.cn/>
- VISION AND ACTIONS ON JOINTLY BUILDING SILK ROAD ECONOMIC BELT AND 21ST-CENTURY MARITIME SILK ROAD, March 28, 2015
- [http://www.mfa.gov.cn/mfa\\_chn/zyxw\\_602251/t1249574.shtml](http://www.mfa.gov.cn/mfa_chn/zyxw_602251/t1249574.shtml)
- Building the Belt and Road: Concept, Practice and China's Contribution
- <https://eng.yidaiyilu.gov.cn/zchj/qwfb/12731.htm>
- National Development and Reform Commission, State Oceanic Administration jointly release Vision for Maritime Cooperation under the Belt and Road Initiative, 2017-06-20
- <https://www.yidaiyilu.gov.cn/wcm.files/upload/CMSydylgw/201706/201706200153032.pdf>

# Chinese people and Chinese projects in Belt and Road countries' currencies



Prof. Dr. WANG  
 Monnet Chair Professor | Director of  
 Institute of International Affairs | Renmin  
 University of China

# The Belt and Road Initiative: What Will China Offer the World in its Rise (English and Arabic Version)



Prof. Dr. WANG Yiwei  
Monnet Chair Professor, Director of  
Institute of International Affairs | Renmin  
University of China

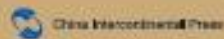


# CHINA CONNECTS THE WORLD

What Behind the Belt and Road Initiative

WANG YIWEI

NEW WORLD PRESS



Prof. Dr. WANG Yiwei (王义桅) | Jean  
Monnet Chair Professor | Director of  
Institute of International Affairs | Renmin  
University of China

# العَالَمُ مُتْرَابِطٌ

مَنْطِقُ مَبَادِرَةِ الْحِزَامِ وَالطَّرِيقِ

المؤلف

وانغ يي وي

المترجم

عمرو جمال علي

ساعد في الترجمة

أحمد الشراكي / شوقي نصر / نزهة الحاج علي



China Intercontinental Press

# 25 other versions



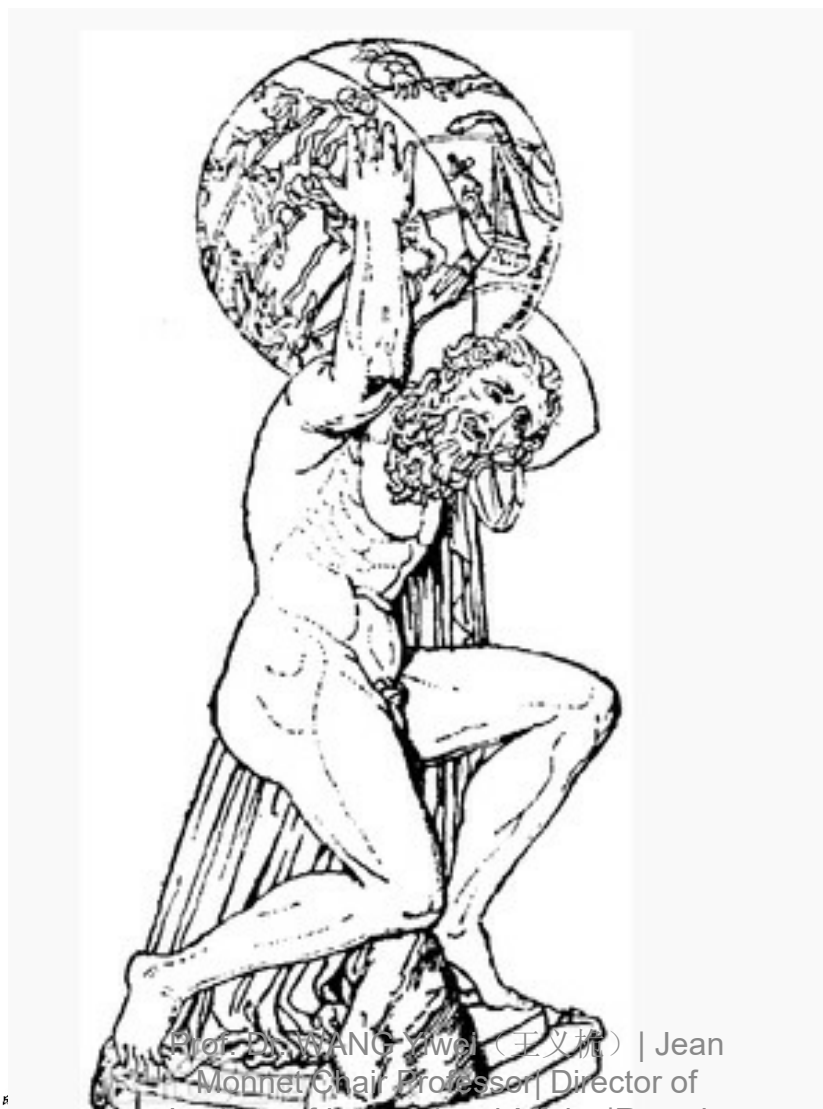
Prof. Dr. WANG Yiwei (王义桅) | Jean Monnet Chair Professor | Director of Institute of International Affairs | Renmin University of China

# 讲好一带一路故事



Prof. Dr. WANG Yiwei (王义桅) | Jean Monnet Chair Professor | Director of Institute of International Affairs | Renmin University of China

# Go Beyond the Western Model Usher in a new kind civilization



Prof. DONGYANG yue (王义旋) | Jean  
Monnet Chair Professor | Director of  
Institute of International Affairs | Renmin  
University of China



# China Provides!



Prof. Dr. WANG Yiwei (王义桅) | Jean  
Monnet Chair Professor | Director of  
Institute of International Affairs | Renmin  
University of China



Prof. Dr. WANG Yiwei (王义桅) | Jean  
Monnet Chair Professor | Director of  
Institute of International Affairs | Renmin  
University of China